

产品规格书

批准	审核	校核	编制
纪春华	朴致均	赵宇辉	郑羿
2019.04.22	2019.04.22	2019.04.22	2019.04.22

规格书更改履历:

序号	更改内容	履历号	更改时间	责任人
1	新规制定	000	2019.04.22	郑羿

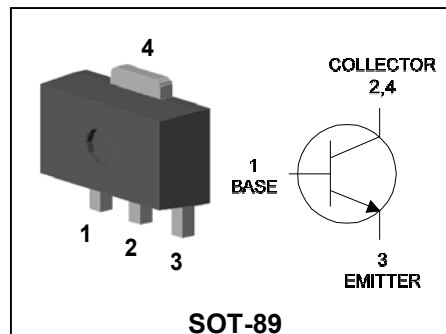
Applications

- Power amplifier application
- High current switching application

Features

- Low saturation voltage: $V_{CE(sat)}=0.15V$ Typ.
@ $I_C=1A, I_B=50mA$
- Large collector current capacity: $I_C=2A$
- Small and compact SMD type package
- Complementary pair with KTA3250F

PIN Connection



Ordering Information

Type NO.	Marking	Package Code
KTC4250F	HW2	SOT-89
	YMD.	

HW2: DEVICE CODE, YMD(Y : Year code, M :Month code, D Date), . Dalian

Absolute Maximum Ratings

[$T_a=25^{\circ}C$]

Characteristic	Symbol	Rating	Unit
Collector-base voltage	V_{CBO}	50	V
Collector-emitter voltage	V_{CEO}	50	V
Emitter-base voltage	V_{EBO}	5	V
Collector current	I_C	2	A
Base current	I_B	0.4	A
Collector Power dissipation	P_C	0.5	W
	P_C^*	1	W
Junction temperature	T_J	150	$^{\circ}C$
Storage temperature range	T_{stg}	-55~150	$^{\circ}C$

※ Device mounted on ceramic substrate ($250mm^2 \times 0.8t$)

Electrical Characteristics

[Ta=25°C]

Characteristic	Symbol	Test Condition	Min.	Typ.	Max.	Unit	
Collector-emitter breakdown voltage	BV_{CEO}	$I_C=10mA, I_B=0$	50	-	-	V	
Collector cut-off current	I_{CBO}	$V_{CB}=50V, I_E=0$	-	-	0.1	μA	
Emitter cut-off current	I_{EBO}	$V_{EB}=5V, I_C=0$	-	-	0.1	μA	
DC current gain	h_{FE}	$V_{CE}=2V, I_C=0.5A^*$	120	-	240		
	h_{FE}	$V_{CE}=2V, I_C=1.5A^*$	40	-	-		
Collector-emitter saturation voltage	$V_{CE(sat)}$	$I_C=1A, I_B=0.05A^*$	-	-	0.35	V	
Base-emitter saturation voltage	$V_{BE(sat)}$	$I_C=1A, I_B=0.05A^*$	-	-	1.2	V	
Transition frequency	f_T	$V_{CE}=2V, I_C=50mA$	-	240	-	MHz	
Collector output capacitance	C_{ob}	$V_{CB}=10V, I_E=0, f=1MHz$	-	15	-	pF	
Switching Time	Turn-on Time	t_{on}		-	100	-	nS
	Storage Time	t_{stg}		-	300	-	
	Fall Time	t_f		-	50	-	

*: Pulse test: $t_p \leq 300\mu s$, Duty cycle $\leq 2\%$

Electrical Characteristic Curves

Fig. 1 $P_C - T_a$

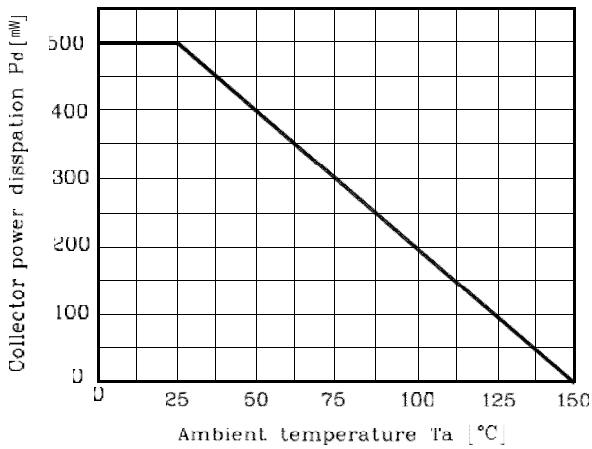


Fig. 2 $I_C - V_{BE}$

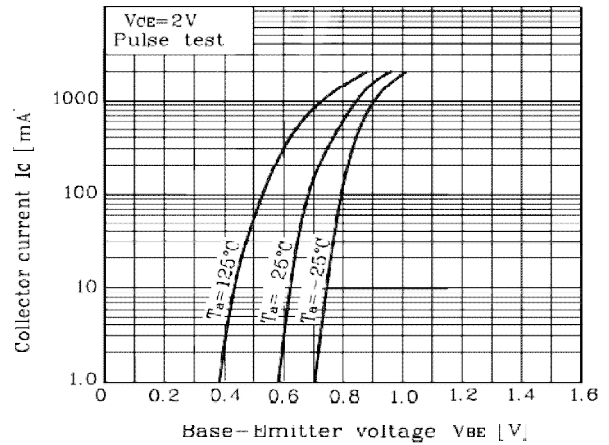


Fig. 3 $I_C - V_{CE}$

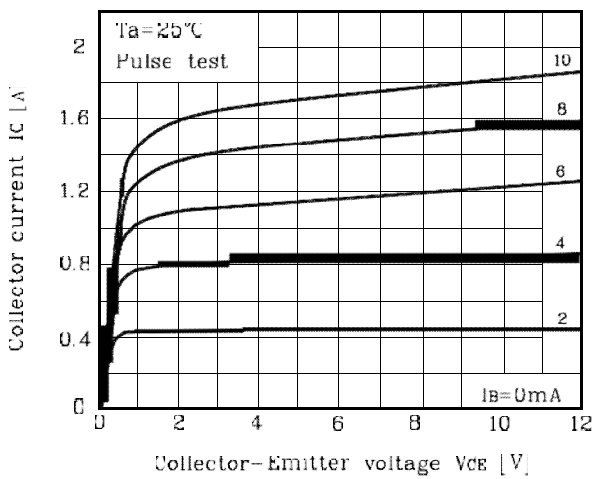


Fig. 4 $h_{FE} - I_C$

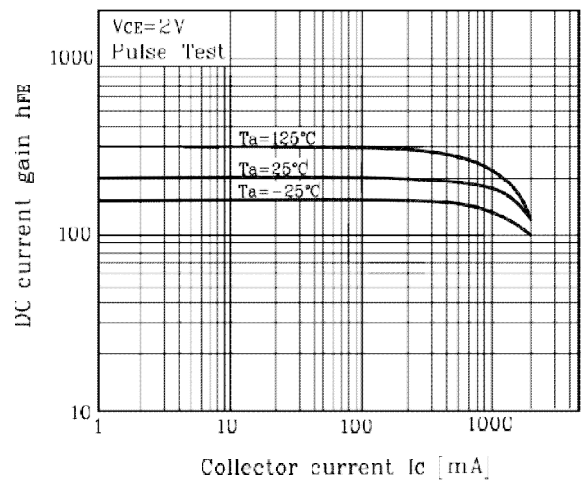


Fig. 5 $V_{CE(sat)} - I_C$

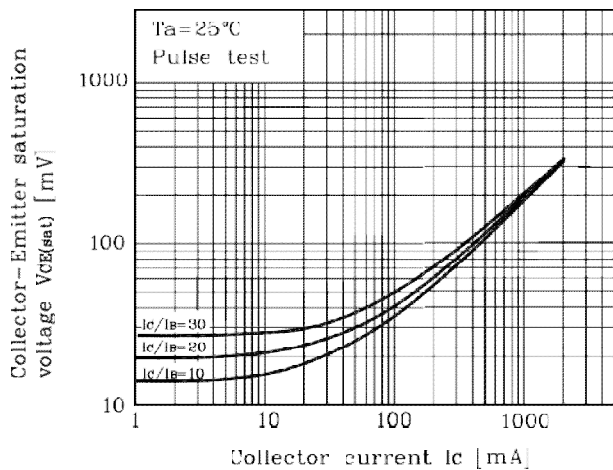
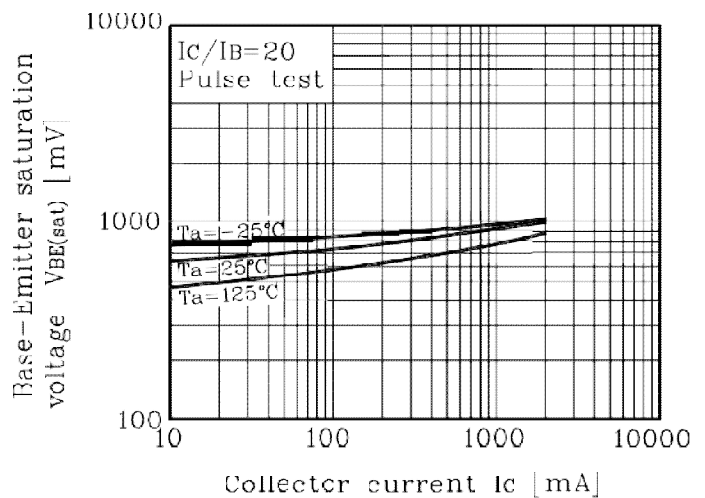


Fig. 6 $V_{BE(sat)} - I_C$



Electrical Characteristic Curves

Fig. 7 $C_{ob} - V_{CB}$

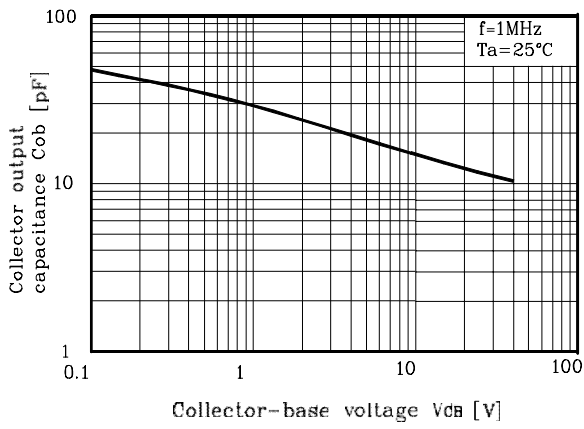
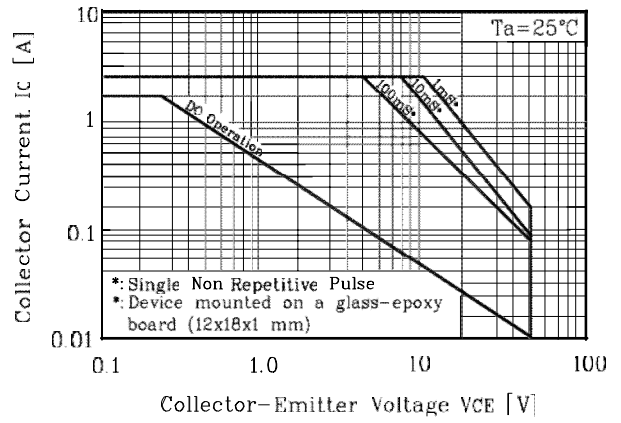
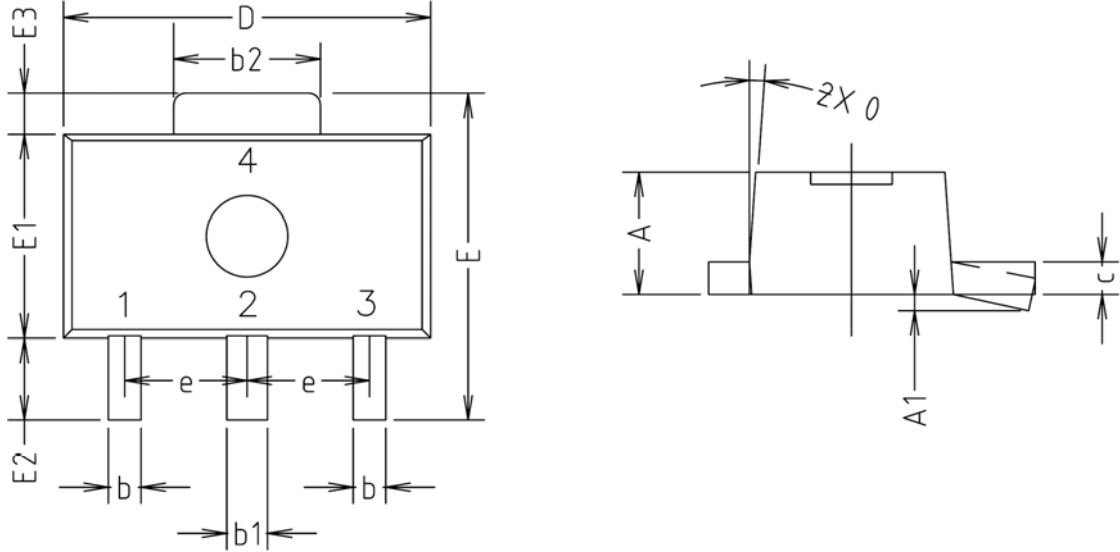


Fig. 8 Safe Operating Area

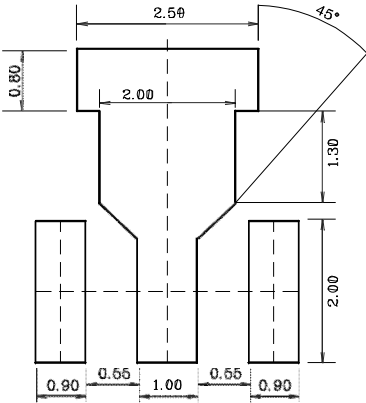


Outline Dimension(mm)



SYMBOL	MILLIMETERS			NOTE
	MINIMUM	NOMINAL	MAXIMUM	
A	1.40	1.50	1.60	
A1	0.00	—	0.10	
b	0.38	0.42	0.48	
b1	0.48	0.52	0.58	
b2	1.79	1.82	1.87	
c	0.40	0.42	0.46	
D	4.40	4.50	4.70	
E	3.70	4.00	4.30	
E1	2.40	2.50	2.70	
E2	0.80	1.00	1.20	
E3	0.40	0.50	0.60	
e	1.50 TYP.			
θ	4° TYP.			

※Recommend PCB solder land [Unit: mm]



SOT-89 Packing包装

区分	Reel	Inner Box	Out Box
数量	4,000	8,000	64,000

The AUK Dalian Corp. products are intended for the use as components in general electronic equipment (Office and communication equipment, measuring equipment, home appliance, etc.).

Please make sure that you consult with us before you use these AUK Dalian Corp. products in equipments which require high quality and / or reliability, and in equipments which could have major impact to the welfare of human life(atomic energy control, airplane, spaceship, transportation, combustion control, all types of safety device, etc.). AUK Dalian Corp. cannot accept liability to any damage which may occur in case these AUK Dalian Corp. products were used in the mentioned equipments without prior consultation with AUK Dalian Corp..

Specifications mentioned in this publication are subject to change without notice.